

# CLOSED-CIRCUIT TELEVISIONS (CCTVS)

For many people with impaired vision, a CCTV is a powerful and welcome tool as they seek new ways to use their remaining eyesight. A CCTV is video magnifier that enables users to continue reading a variety of materials and, with some models, also facilitates handwriting.

Based on the technology originally developed for the security/surveillance field, CCTVs have been used by visually impaired people for more than 30 years. A CCTV system uses a stand-mounted or hand-held video camera to project a magnified image of a user-selected printed matter onto a dedicated video monitor or a TV screen.

CCTV systems have limitations, but here are several advantages to consider as you decide whether a CCTV is the right tool for you:

- Viewing the screen from a normal reading distance enables people with binocular vision to use their vision better.
- The zoom lens allows for rapid change in magnification.
- Reverse contrast option (white on black) may be less fatiguing for eyes.
- Easier handwriting abilities than conventional magnifiers.
- Higher level magnification than possible with purely optical solutions.
- A larger field of view is sometimes helpful.
- Moveable viewing table may help people with field restrictions keep their place when reading.

## CCTV Designs

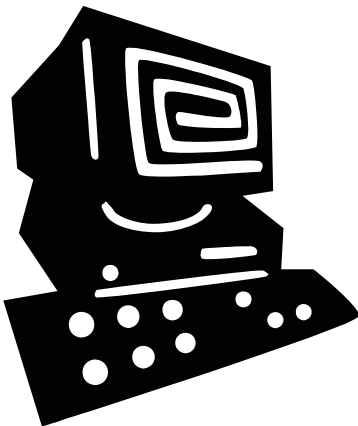
CCTVs currently come in two basic designs: stand mounted or hand held. To use a stand-mounted CCTV, you place the reading material flat on the unit's viewing table (like a small desktop) under the camera. To make viewing easier, stand-mounted units usually feature



a moveable viewing table that can glide from top to bottom and from side to side, making it easier to navigate through the material. Stand-mounted models are good for reading and are particularly effective for handwriting because your hand can easily fit under the camera on the viewing table. Many people use stand-mounted units for reading the newspaper or books, reading and paying bills, or reading and writing letters.

In contrast to stand-mounted units, hand-held units are more flexible systems that make it possible for you to position the camera on the material that needs viewing rather than requiring you to place the material on a unit-based viewing table. Depending on the model, the image is then shown on a dedicated video monitor, attached to a standard TV, or, if battery-operated, used with a portable small flat video screen or a head-mounted display. These units can magnify almost anything within reach of the camera, including labels on food and medicine. Hand-held units frequently include rollers that make it easier to move over a table. Some hand-held cameras include, (as an accessory), a fixed stand that attaches to the unit for hands-free operation.

Technological innovations continue to expand the ways you can use CCTVs. Some now offer a split-screen feature allowing simultaneous viewing of computer data and the CCTV images on your computer monitor.



## **Common Features**

Available in black and white or color, CCTV systems come in various screen sizes. All black and white CCTV systems offer a reverse contrast option of viewing black letters on a white background or white letters on a black background.

Controls for contrast and brightness are also standard on today's units. Video monitors generally provide a sharper image than do some televisions, and many CCTVs that use a dedicated video monitor may include special features such as underlining/over lining text options or masking (viewing one line of text at a time).

## Price range and payment options

For many people, CCTVs are an investment, but a very worthwhile one. Many models have a range of magnification that allows users to continue using them for many years even as vision continues to change. Most machines come with a two-year warranty. Through the years, we have found most machines to be very durable with little need for repair.



CCTV systems typically range in price from \$300 to \$3000 plus applicable taxes. The CCTVs available at CSBPS can be viewed on our website, [www.sightconnection.com](http://www.sightconnection.com).

CCTVs available through CSBPS are competitively priced at the Manufactured Suggested Retail Price (MSRP). What's more, net proceeds from these sales go to support the programs and services of CSBPS including:

- Information and referral
- A low vision clinic
- One on one counseling
- Training in safe travel and independent living
- Personal service volunteers

CSBPS has a CCTV rental program and coordinates consignment sales of used CCTVs, as well as other low vision devices. The availability of units varies and is usually quite limited. Rental rates range from \$30 to \$70 monthly plus applicable taxes. If you are interested in renting, purchasing or selling a used CCTV, please contact CSBPS at **(800) 458-4888**.

## To view CCTV models available through CSBPS

For more information, product literature or a personal demonstration, contact the agency for an appointment.

Please note that an appointment for a CCTV demonstration is strongly recommended if you wish to see the selection of CCTVs available through the agency. While we try to accommodate walk-in customers wishing to see CCTVs, you may or may not be able to see the units without an appointment if we are busy with previously scheduled clients.



## Visit our adaptive aids store, **SightConnection** online 24/7.

We have over 400 products for living with vision loss.

We are your local source for vision needs.



**www.SightConnection.com or call (800) 458-4888, 9 AM - 5 PM, M-F**

---

### **C • S • B • P • S**

#### **Programs and Services**

- Low vision clinic and low vision rehabilitation
- Instruction in independent living skills
- Professional counseling and support groups
- Safe travel and orientation training
- Education, information and referral services
- Assistive Technology resources
- Adaptive aids specialty store, SightConnection

Since 1965, our mission has been to work with individuals, families and communities to restore, maintain and enhance the independence and well being of people with impaired vision.

### **Community Services for the Blind and Partially Sighted**

9709 Third Ave NE #100, Seattle, WA 98115-2027

(206) 525-5556 (v/tdd)

(800) 458-4888 (v/tdd)

(206) 525-0422 (fax)

Email: [csbps@csbps.com](mailto:csbps@csbps.com)

Website: [www.csbps.com](http://www.csbps.com)

Adaptive Aids Store: [www.SightConnection.com](http://www.SightConnection.com)

Agency hours: 8 AM – 5 PM, M-F

SightConnection Store hours: 9 AM - 5 PM, M-F

*©2009 Community Services for the Blind and Partially Sighted  
Reprint or copy only with permission from CSBPS*

***Support for this publication provided by the Alfred and Tillie Shemanski Trust Fund***